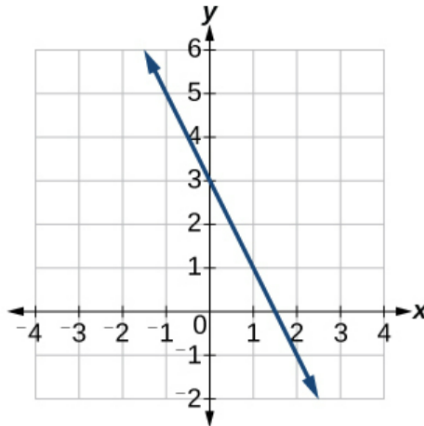


## Exercise 43

For the following exercises, write an equation for the lines graphed.

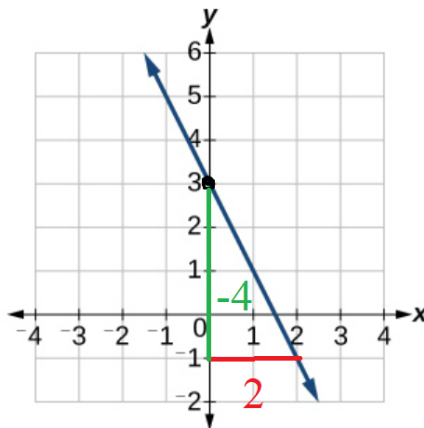


### Solution

The general equation of a line is

$$y = mx + b.$$

Determine the slope of the line first.



It's the ratio of the "rise" to "run."

$$m = \frac{-4}{2} = -2$$

Notice that the line crosses the  $y$ -axis at 3, so  $b = 3$ . Therefore,

$$y = -2x + 3.$$